



ZL CODE T BLACK LAMINATES

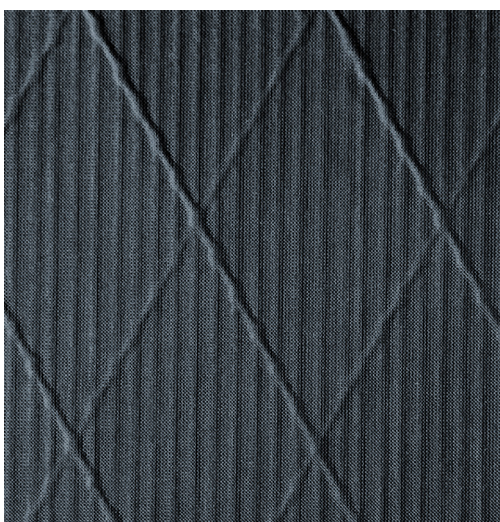
Great performance on beam/broad reach courses

➔ *Designed for radial cut sails*

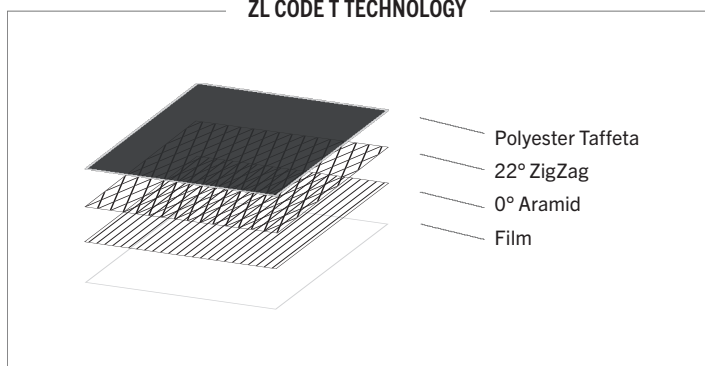
Code 0 sails have become increasingly popular as a powerful addition to the inventory and a must-have sail for certain sailing angles. Our ZL Code T Black laminate range combines black aramid fibers with our solution-dyed, 50 denier black taffeta for a high-tech appearance that compliments the latest look in performance sailcloth.

Code T Black laminates feature variable aramid warp counts for smooth step-up constructions, allowing sailmakers to optimize strength to weight performance for each sail. Off thread line stability, critical in a flying sail, is addressed with ZigZag fibers crossing at 22° on either side of the warp. These fibers address loads that shift throughout the sail, especially in a heavy seaway and add to the tear resistance of the fabric. A lightweight 50 x 50 polyester taffeta keeps the cloth weight down and makes for a soft hand for easier sail handling.

- Black taffeta and high modulus fibers for a high tech look
- Aramid fibers for high strength, light weight performance
- Complimentary weights for step up constructions
- Soft hand for easier sail- handling



ZL CODE T TECHNOLOGY





ZL CODE T BLACK LAMINATES

Great performance on beam/broad reach courses

APPLICATIONS ZL CODE T BLACK LAMINATES

LUFF LENGTH		CODE ZERO 50° - 90°
IN FT	IN M	
± 40	± 12	ZL-B 40
± 47	± 14.5	ZL-B 40-60
± 61	± 18.5	ZL-B 60
± 69	± 21	ZL-B 60-80
± 76	± 23	ZL-B 80
± 86	± 26	ZL-B 110
± 96	± 29	ZL-B 110

CONSTRUCTIONS ZL CODE T BLACK LAMINATES

STYLE	CONSTRUCTION BLACK ARAMID / TECHNORA BLACK				AVERAGE WEIGHT		COLOR	WIDTH
	FILM MIL. BLACK MATTE	BLACK ARAMID COUNT 0°	BLACK ARAMID DPI 0°	TECHNORA DPI 22° ZIG ZAG	G/M ²	SM OZ		
ZL-B 40	0.5	2 x 1140	2280	1500	90	2.10	Black	150 cm
ZL-B 60	0.5	4 x 1140	4560	1500	103	2.40	Black	150 cm
ZL-B 80	0.5	6 x 1140	6840	1500	116	2.70	Black	150 cm
ZL-B 110	0.75	8 x 1140	9120	1500	201	4.70	Black	150 cm